



ANNUAL REPORT 2014-2015



ATMA
AN ACCELERATOR FOR EDUCATION



About Atma

Focus area: Special Education, School Reform, Before & After School Program and Life Skills

Target group: 2-18

Funds raised: INR 1,01,30,725.93

Budget: INR 1,57,59,263.00

Team size: 10-15

Total beneficiary reach: 60,000

Number of partners: 12

Vision

Quality Education for All Children

Mission

Building capacity of education NGOs to achieve organisational sustainability and scalability thereby enabling delivery of quality education

Atma Values

Partnership: We believe in creating a safe space for collaboration through which true social change can happen.

Accountability: We work to maintain the highest standard of NGO accountability, setting an example for other organisations in the social space. We are accountable to donors and Atma partners to provide sustainable, impactful services.

Diversity: We believe the collaboration of diverse cultural backgrounds, experience, skills, and professional backgrounds united towards a single cause can create the best possible solutions to the challenges faced by Atma and Atma partners.

Life-Long Learning: We believe in continued innovation, learning and sharing of ideas that will help us respond to the changing environment. Atma constantly reviews, renews and builds upon our model and practices.

Entrepreneurship: We believe in the power of entrepreneurship as the change agent. We actively encourage entrepreneurship and foster the dynamic and entrepreneurial approach to challenges internally and within the social sector as a whole.

About Atma	- 2
Board of Trustees	– 3
Message from the Executive Director	– 5
The Accelerator Program	– 6
Volunteer Program	– 10
Fundraising	– 12
Donate	– 13
Events	– 14
Our Partners	– 15
Financial Statement-	16

Board of Trustees

Mahesh Rathod worked for the Government of Mauritius as Regional Director and is also a board member of ANZBAI (Australia New Zealand Business Association of India) and the Education Committee of MEDC (Maharashtra Economic Development Council). He is one of Atma's founding trustees and at present is the Country Head (Investments) for the Australian Trade Commission, the Australian Federal Government's Trade and Investment Agency.



Dr. Rahul Sood is a Mumbai native. He studied Economics at Elphinstone College, Mumbai. Later, he earned his BA in Film at Stanford University, an MS in TV-Radio at Syracuse University, and a Ph.D. in Communication Research from Stanford University. After returning to Mumbai from the US in the mid-90s, he focused his career on pro-social TV serials. Upon witnessing the true need of Mumbai's NGOs and a brief encounter with Atma founders Hayley Bolding and Adrienne van Dok, Dr. Sood agreed to support Atma's vision.



Naresh Kripalani has been an Atma supporter right from its inception. After obtaining an engineering degree from Indian Institute of Technology (IIT) he pursued Masters in Operations Research from University of California at Berkeley. After a long stint with IBM in San Francisco, he returned to India in the early 90s to start a series of SAP (software) Training Centres. He joined Atma as an advisor since he identified with the organization's approach to addressing the lack of quality education. Mr. Kriplani became an Atma Chairperson in March 2012.



Anant Bhagwati is a partner at Bain and Company in Mumbai. Anant got to know the Atma as an advisor and mentor to our team, aiding Atma in fundraising strategy before joining the board in 2014. Anant is an expert in sales strategy and operational improvement. Anant previously worked with Accenture and Hindustan Unilever. He has an MBA from IIM Ahmedabad and BE in Computer Engineering from the University of Delhi



Board of Trustees

Amit Murugkar is Founder & Director at Evolve – an organisation that provides training and consultancy services to improve personal and managerial effectiveness. A motivational trainer, Amit received his postgraduate degree in Sales and Marketing from Tack Training International, UK. He has previously worked with Pfizer, Baxter and Johnson & Johnson in various leadership roles. Amit's association with Atma began in 2007 as a volunteer.



Krishna Ramkumar is the co-founder and CEO of Avanti. Avanti's Learning Centers provide low-income high-school students a world-class science and mathematics education. Krishna graduated from IIT Bombay in 2008 with a degree in Chemistry. At IIT, Krishna was the head of the Institute Student Mentor Program and editor of InslghT, the student newspaper. He was also awarded the Shankar Dayal Sharma gold medal for overall academic and extra-curricular achievement at IIT Bombay. Krishna was listed on Forbes 2014 Top 30 under 30 social entrepreneurs.



Pooja Warier is co-founder and CEO of UnLtd India, Journeys for Change and Bombay Connect. Pooja has worked with a number of non-profits and was also actively involved in the organizing of the fourth edition of the World Social Forum in Bombay. She is constantly on the lookout for doing things that are meaningful. Pooja has been honored as a Young Global Leader by the World Economic Forum. She is also a TED India Fellow.



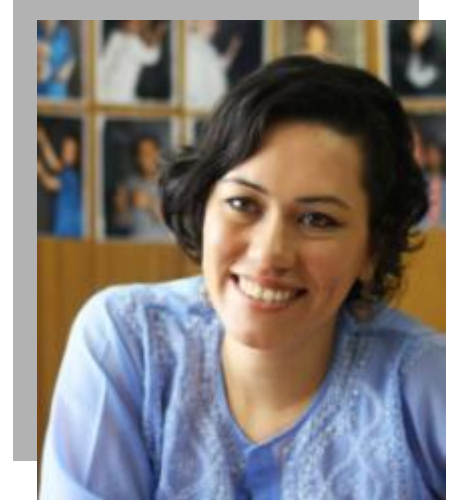
Message from the Executive Director

2014-15 was a very significant year. We gained inspiration from students, educators and the amazing Atma Challengers!

Atma's life was filled with 12 high-potential education NGOs and 56 dedicated volunteers. The Atma team created an amazing Monitoring and Evaluation assessment to help our partner NGOs and improve their offering – all I can say is that the Atma team was stellar.

We piloted two innovative programmes:

- Leveraging Tech in Education - implementing the Zaya Labs in two of our partner NGOs
- The Atma Network - a capacity building platform for NGOs featuring all Atma's best practices



In September 2014, we welcomed 21 Atma Challengers who climbed the 20,182 ft Stok Kangri mountain in India's Ladakh region and raised funds for Atma. The Challengers, a group of 21 Dutch citizens, raised over 50,000 Euros towards Atma's work. After their intrepid climb, we welcomed them in Mumbai for a 4 day visit where they met all the people they were supporting. Throughout, the Atma team was dedicated and perseverant making the impossible possible.

As we look into 2015-16, we are excited to see the journey of our partner NGOs and the impact they will be creating. Once again, a big big thank you to all our supporters!

A handwritten signature in blue ink, which appears to read 'Mary Ellen Matsui'.

Mary Ellen Matsui
Executive Director, Atma

About Accelerator Program



Photo: Udaan India Foundation

The Accelerator Program identifies high-potential education non-profits and inducts them into the Accelerator Program for a period of 3 years. During this period Atma provides them with 1200 hours of expertise, 1 dedicated Portfolio Manager and 3 volunteers with relevant skill-sets to match the projects that they need to undertake.

A non-profit partnering with Atma goes through the following process:

A) Organizational Life Stage Survey: Organizational Life Stage Survey (LSS) help organizations delve into their organizational strength areas and give ratings across: Governance, leadership, staffing, finances, administration, fundraising, monitoring and evaluation, programs, marketing, and strategy. These ratings help organizations navigate and overcome the systemic issues challenges that hold them back from providing sustainable high quality education programs. The LSS takes only a few hours with each organization and is repeated annually.

B) Program Health Check Up & Literacy Level Checks: A per program assessment of the organization helps to identify needs of the organization's program at a more macro view as an aggregate and decide their program need priorities. The tool looks at: teaching and leadership, curriculum, learning environment, learning opportunities, evaluation of learning, and impact and overall program development (in terms of program depth and breadth, gender equity, scale) and assesses a sample set of student literacy levels. These assessments form the basis of each organization's improvement map and prioritize issues in classroom and at a student level accordingly. The assessment takes a few hours on site and is repeated annually with the organization.

C) Business Planning: Each organization is asked to complete a 3-5 year business plan in order for Atma to understand their vision for the growth of their organization. This process is workshopped with the organizations and a group of business planning consultants who help with the creation of the plan and the budgets and financial projections. The business plan will be revisited each year to make amendments based on changes in the organization.

About Accelerator Program

D) Annual planning: Along with the business plan each organization develops an Annual Implementation plan and Annual Impact Plan. These two documents provide the framework for organization capacity improvement and program strengthening. Special focus on literacy: The efforts of the organizations' planning improvements will bring special focus on literacy levels, and achievement of grade level proficiency.

E) Project Definition: Based on each organization's Annual implementation and impact plans, Atma defines the scope of organizational development and learning projects to be implemented within each organization. The projects for the year are devised annually and revisited quarterly in Atma's quarterly Sync-ups.

F) Project Definition: Based on each organization's Annual implementation and impact plans, Atma defines the scope of organizational development and learning projects to be implemented within each organization. The projects for the year are devised annually and revisited quarterly in Atma's quarterly Sync-ups.

G) Volunteer recruitment and placement: Volunteer recruitment is carried out on an ongoing basis. Volunteers are recruited through a strong referrals program and online advertising and placed in professional roles that suit their specific skills set.

H) Trainings and Workshops: Training topics are selected based on the skill needs of the employees and/or leadership of the organization. These sessions are facilitated by an external trainer to Atma. Workshops are designed to be sharing sessions on strategic or programmatic challenges faced by organizations. There is special focus on literacy, the training topics focus on common need areas of organizations to boost literacy outcomes.



Funded by KPMG, Atma conducted English Speaking training for two batches between 2014-15. More than 40 people from various NGOs attended the training programme. Each batch spent 4 months in learning the basics.

About Accelerator Program

Resource Mobilization: Each organization's annual planning documents, resource requirements (financial, advisory and in kind) are compiled into a proposal format. The Atma Resource team then aid the organization in pitching their programs to various funders.

Special focus on literacy: Each organization will take up at least four projects focused specifically on improving their literacy outcomes.

Monitoring and Evaluation: Annual assessments of the organization's programs and impact are completed and given to the organization as a third party assessment.

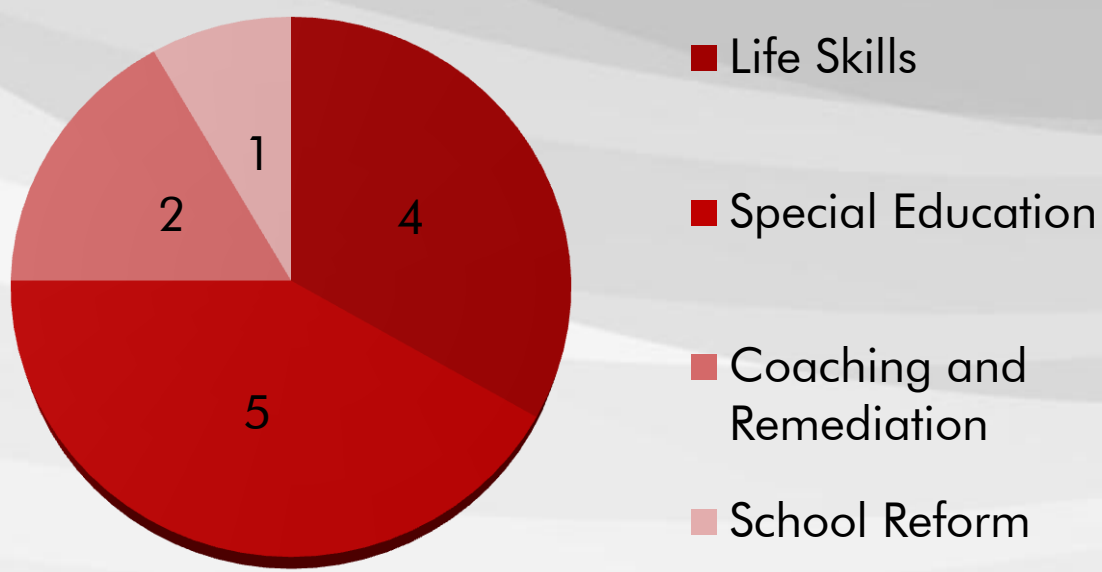


Active and Graduated Partners 2014-2015

Sr. No	Organisation	Enrolment Year	Status
1.	Apni Shala	2013	Active
2.	Bright Future	2012	Active
3.	Mimaansa	2012	Active
4.	Mann	2014	Active
5.	Muskan Foundation	2012	Active
6.	OSCAR	2013	Active
7.	Sahyog	2012	Active
8.	Sol's ARC	2013	Active
9.	Udaan India Foundation	2013	Active
10.	Umang	2013	Active
11.	VIDYA	2012	Active
12.	St. Willibrords School	2014	Active



Accelerator Focus Area 2014-15



About Volunteer Program



Photo: Cassandra Wright (Standing) presents her project work to her fellow volunteers at the Atma office. Cassandra is a student from RMIT University (Australia) and worked on marketing projects for Atma partner Mimaansa.

Between 2014 to 2015, around 576 candidates applied for the Atma Volunteer Program. Only **56 highly skilled volunteers** were selected.

Atma provides volunteering opportunities to talented candidates across the world to apply their skills in a challenging work environment in Mumbai. Volunteers are an integral part of Atma's work force contributing to over 70% of our work with education NGOs and social enterprises.

By matching skill sets and interests with the needs of organisations in the Atma portfolio we identify exciting projects for volunteers to work on. Internally, we refer to volunteers as Consultants or Interns.

Atma Consultants

- Have several years of professional experience
- Help in management aspects of the organisation
- Interface with multiple stakeholders of the organisation including board members, external consultants and staff

Atma Interns

- are student at the universities or recent graduates
- are closely managed by Atma and the Atma portfolio organisation
- use their Atma volunteerships to fulfil course requirements

Interested in volunteering with us? Write to: volunteers@atma.org.in

In 2015, we launched Volunteer Performance Reports (VPR). The VPR is an individual performance report of the volunteer and evaluates them in areas like adaptability, communication, dealing with ambiguity, initiative, integrity, learning on the fly, interpersonal skills and sensitivity.

Volunteer Experience



In my four months working at Atma I have three main projects in the area of Monitoring and Evaluation. With our partners Mann and Muskan in special-ed, I am building an inventory management tool and a student performance tracker. With

Oscar I am mapping out their life skills curriculum and designing questions to monitor the life skills of their football program participants. Alongside this I have gained a broad insight into the workings of education NGOs and I have loved getting to know some of our partners and their beneficiaries.

What I like most about working with Atma is having to come up with innovative and resourceful ways of solving the challenges associated with my projects and the inspiring and talented people I work with. Mumbai and its development sector have so much to offer that I am seriously considering coming back again for more prolonged stay.

Larissa (27 yrs) has her roots in UK, Germany and Czech Republic. She holds a BSc in Psychology and an MA in International Relations.

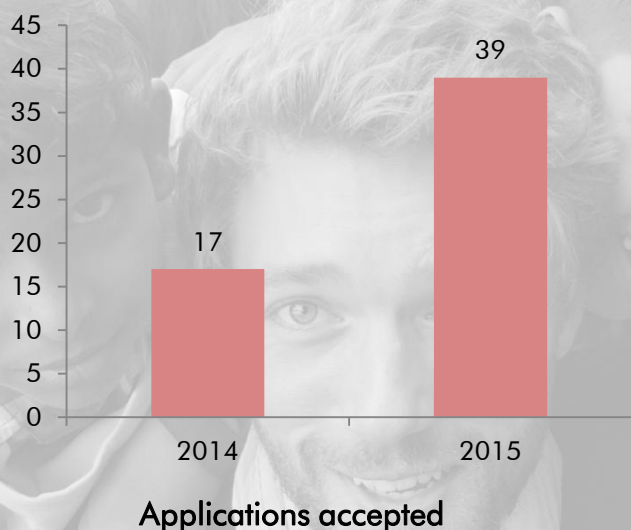


I have been working with two Atma Partners - OSCAR Foundation and Mimaansa on Monitoring & Evaluation projects.

My experience at Atma was exciting. I made a lot of new friends. The reason why I came to Atma was because I wanted professional experience in the social field. I like to work with people, be useful and work for the change that I want to see.

Antoine (far left) has a Masters in Economics (Analysis & Research) from ULB University, Brussels. He intends to work for the developmental sector after returning home. — with Ashok Shankar Rathod and Suraj Patro. Antoine Dewatripont arrived in India in mid October 2014.

Volunteer Data



"We forged a very strong bond with Atma volunteers. They got to work with the beneficiaries and it was not just a back office relationship. The volunteer would go into the field and that helped them get a lot of satisfaction. Some of the volunteers eventually ended up working with us."

-Manvi Singh, Director of Operations, VIDYA (Atma partner since 2012)

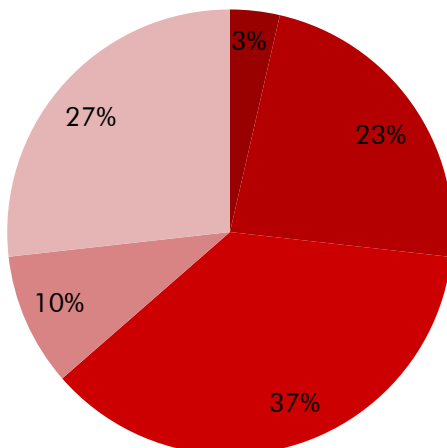
Fundraising



Photo: Atma Challengers 2014 at the summit of Stok Kangri mountain. Atma Challengers is an initiative of the Atma Netherlands Board where passionate individuals from across Nettherlands take up an adventure to support Atma's cause. In 2014, Atma Challengers raised €50,285 by climbing the Stok Kangri mountain.

The average cost per organisation to Atma is **INR 5,50,000**. Between 2014-2015, Atma was successful in raising **INR 1,01,30,725.93**. In 2014-15, NGOs like Muskan, Sahyog, Sol's ARC, Urja, VIDYA and St. Willibrords School graduated from the Atma Accelerator program. Atma raises funds from a variety of mediums – Foundations, Events, Services (Monitoring & Evaluation), International Chapters, Individuals and CSR.

Total funds raised: INR 1,01,30,725.93



- Service Income
- Events/ Marathon
- Foundations/Corporate
- General / Others Donation
- International Chapter

Donate to Atma



Between 2014-15, Atma served 12 NGOs and reached out to 34,933 students. We'd like to thank all our donors and supporters in believing our cause. There are a no. of ways in which you can support Atma – by donating, volunteering or donating-in-kind.

All information regarding how to donate is available on www.atma.org.in/donate. Atma's Reg no is E-24614 (Mumbai) and FCRA Reg no. is 083781317. For CSR partnerships or questions related to local or international donations, please get in touch with taniya@atma.org.in.

Connect with Us!

Atma is an Accelerator for Education NGOs and Social Enterprises in Mumbai. We empower grassroots education NGOs to become bigger, better and stronger. Founded in 2007, Atma has worked with 50 education NGOs and reached out to 80,000 + beneficiaries in Mumbai & Thane region.

For more information, please visit www.atma.org.in

Atma is Registered under the Bombay Public Trust Act No.
E-246141950

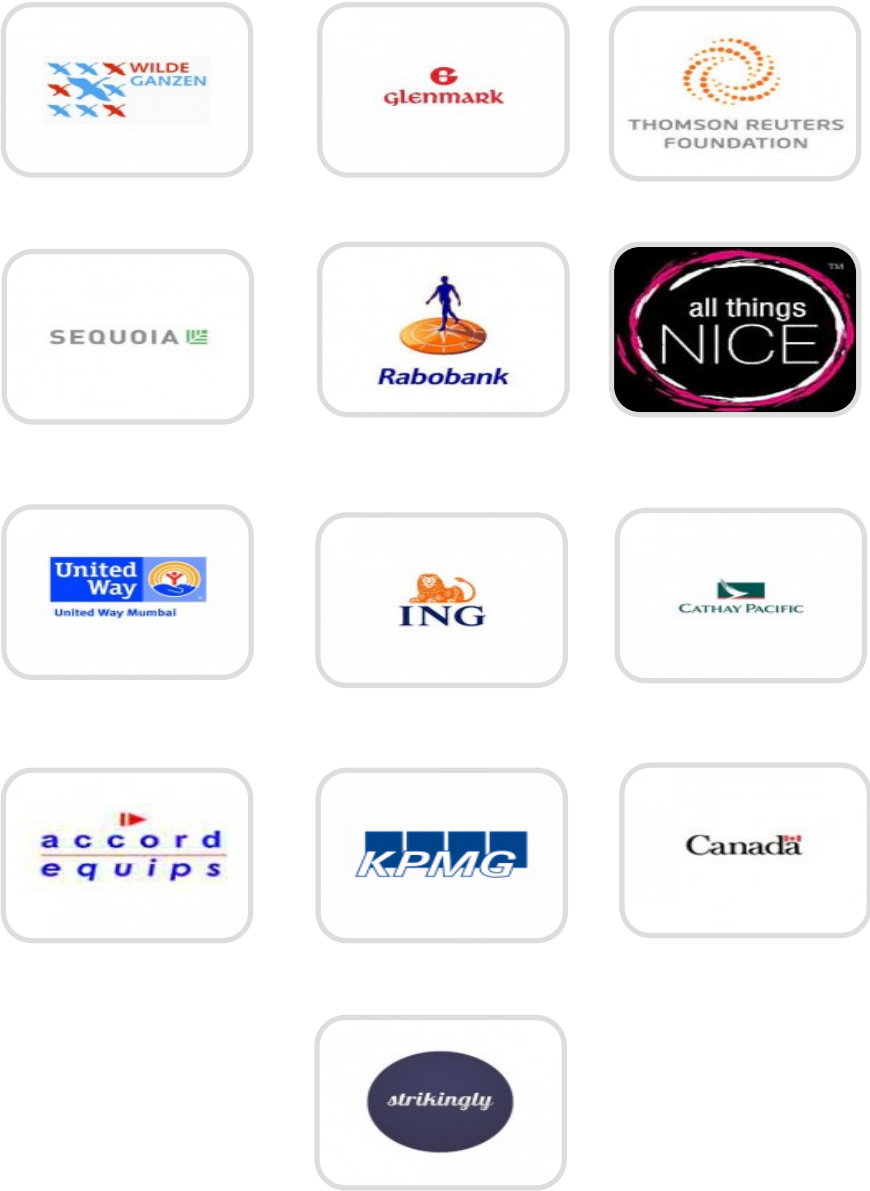
Address: A-9, 3rd Floor, Liberty Building, Hill Road, Next to Vodafone Centre, Bandra (W), Pin: 400050. | Office: +91 2226429313 | Email: contact@atma.org.in

Events



1. Atma Challengers visit Atma Partner Bright Future.
2. American Library (Mumbai) conducts a workshop for staff from Atma Partner St. Willibrords School.
3. Atma in partnership with ORF and Sol's ARC formed a committee on inclusivity of children with special needs in govt schools.
4. Supported by ING Foundation, Zaya teaching assistants have learned valuable skills and how to put them to good use to improve the learning outcomes of the students they have worked with.

Our Partners



Financial Statement

Sunil Goel & Associates

CHARTERED ACCOUNTANTS

86 Paschimi Marg, Vasant Vihar
New Delhi-110057. INDIA
Phone : +91-11-41663000 Fax : +91-11-41662000
E-mail: info@sunilgoel.com

C-14, Sector-7
Noida-201301, (UP). INDIA
Phones : +91-120-4033000, 4266500 Fax : +91-120-4033030
Url : www.sunilgoel.com

INDEPENDENT AUDITORS' REPORT **TO THE TRUSTEES OF ATMA EDUCATION**

We have audited the accompanying financial statements of **Atma Education (A Trust Registered under Bombay Public Trust Act, 1950)**, which comprise the Balance Sheet as at **31st March, 2015** and the Statement of Income & Expenditure and the Receipts & Payments Account for the period then ended and a summary of significant accounting policies and other explanatory information.

1. Management's Responsibility for the Financial Statements

Management is responsible for the matters stated in section 32 of the Bombay Public Trust Act, 1950 ('The Act') with respect to the preparation of these financial statements that give a true and fair view of the financial position and financial performance of the Trust. This responsibility includes the design, implementation and maintenance of internal control relevant to the preparation and presentation of the financial statements that give a true and fair view and are free from material misstatement, whether due to fraud or error.

2. Auditor's Responsibility

Our responsibility is to express an opinion on these financial statements based on our audit. We conducted our audit in accordance with the Standards on Auditing issued by the Institute of Chartered Accountants of India. Those Standards require that we comply with ethical requirements and plan and perform the audit to obtain reasonable assurance about whether the financial statements are free from material misstatement.

An audit involves performing procedures to obtain audit evidence about the amounts and disclosures in the financial statements. The procedures selected depend on the auditor's judgment, including the assessment of the risks of material misstatement of the financial statements, whether due to fraud or error. In making those risk assessments, the auditor considers internal control relevant to the Trust's preparation and fair presentation of the financial statements in order to design audit procedures that are appropriate in the circumstances, but not for the purpose of expressing an opinion on the effectiveness of the Trust's internal control. An audit also includes evaluating the appropriateness of accounting policies used and the reasonableness of the accounting estimates made by management, as well as evaluating the overall presentation of the financial statements.

We believe that the audit evidence we have obtained is sufficient and appropriate to provide a basis for our audit opinion.

Contd....

ATMA_31March15 - AR - Final



Page | 1 of 2

INDEPENDENT AUDITORS' REPORT
TO THE TRUSTEES OF ATMA EDUCATION (Contd.)

3. Opinion

In our opinion and to the best of our information and according to the explanations given to us, the financial statements give the information required by the Act in the manner so required and give a true and fair view in conformity with the accounting principles generally accepted in India:

- I. In the case of the Balance Sheet, of the State of Affairs of the Trust as at **31st March 2015**; and
- II. In the case of the Statement of Income and Expenditure, of the **Surplus** for the period ended on that date.
- III. In the case of Receipts & Payments Account, of the Receipts & Payments of the Trust for the year ended on that date.



Place: New Delhi
Date : 30th September, 2015

for SUNIL GOEL and ASSOCIATES
Chartered Accountants

SUNIL GOEL, FCA
M. No. 081264
Firm Reg. No. 002303N

THE BOMBAY PUBLIC TRUSTS ACT, 1950
Schedule VIII
[Vide Rule 17(1)]

ATMA Education
BALANCE SHEET AS AT 31st MARCH 2015

Amount 31-3-14 (₹)	FUNDS & LIABILITIES	Amount 31-3-15 (₹)	Amount 31-3-14 (₹)	PROPERTY AND ASSETS	Amount 31-3-15 (₹)
3,000	Trusts Funds: Balance as per last Balance Sheet	3,000		Immovable Property (At Cost) : Balance as per last Balance Sheet	-
	Adjustment During The Year	-		Additions during the year	-
		-		Less : Book Value Of Asset Scrap	-
	Other Earmarked Funds: (Created under provisions of the trust deed or scheme or out of the income)	-		Depreciation up to date	-
	1. Depreciation Fund	-	2,687,046	Investments :	-
	2. Sinking Fund	-		Fixed Deposits	1,558,525
1,718,703	3. Reserve Fund	1,718,703	227,246	Furniture & Fixtures: (Annexure A)	197,536
	4. Gratuity Fund				
	Loans (Secured or Unsecured) :			Loans (Secured or Unsecured):	
	From Trustees	-		Loans Scholarships	
	From Others	-		Other Loans	
	Liabilities:			Advances	
10,381	For Expenses	-		To Trustees	
	For Advances	-		To Employees	274
	For Rent & Other Deposit	-	347,268	To Contractor	
	For Sundry Credit Balances	(37)		To Others	347,241
	Income and Expenditure Account			Income Outstanding	
63,616	Balance as per last Balance Sheet	3,006,931		Cash and Bank Balances:	
2,946,620	Add/(Less): Surplus/(Deficit)	1,063,161	1,268	Cash with manager (Namita Vaidya)	3,090
			1,479,492	Current Account with HDFC Bank In the name of Atma Education	3,685,090
4,742,320	Total	5,791,757	4,742,320	Total	5,791,757

The above Balance Sheet to the best of our belief contains a true account of the Funds and Liabilities and of the Property and Assets of the Trust

As per our report of even date
For SUNIL GOEL & ASSOCIATES
Chartered Accountants
FRN : 002303N


Proprietor
Sunil Goel
Mem. No. : 081264

Place: New Delhi
Date: 30 SEP 2015



For ATMA EDUCATION


Rahul Sood
Trustee

Place: Mumbai
Date: 30 SEP 2015

For ATMA EDUCATION


Naresh Kriplani
Trustee

THE BOMBAY PUBLIC TRUSTS ACT, 1950

Schedule IX
[Vide Rule 17(1)]

ATMA Education

INCOME & EXPENDITURE ACCOUNT FOR THE YEAR ENDING 31st MARCH 2015

Amount 31-3-14 (₹)	EXPENDITURE	Amount 31-3-15 (₹)	Amount 31-3-14 (₹)	INCOME	Amount 31-3-15 (₹)
	<u>To Expenditure in respect of properties:</u>		-	By Rent	
	a) Rates, Taxes, Cesses	-		<u>By Interest Received</u>	
	b) Repairs and Maintenance			a) On Securities	
	Less: Utilized from Depreciation Fund per contra			b) On Loans	
	c) Salaries	-	59,606	c) On Savings Bank Account	164,440
	d) Insurance	-	238,014	d) On Fixed Deposits with Bank	
	e) Depreciation (by way of provision or adjustments)	-			
	f) Other expenses	-		By Dividend	
		-	10,953,552	By Donation in Cash or Kind	10,277,111
				By Grants	
1,555,138	To Establishment Expenses	1,327,214	2,700	<u>By Income from other Sources</u>	
	To Legal Expenses	17,358		Sale of Scrap	1,002
	To Audit Fees	30,000		English Class Fees	1,000
	To Contribution and Fees				
38,619	To Miscellaneous Expenses				
	To Depreciation	36,710			
	<u>To Amount transferred to Reserve or Specific Funds</u>				
	a) Transfer to depreciation fund				
	b) Transfer to gratuity fund				
	<u>To Expenditure on Objects of the Trust</u>				
6,713,495	a) Religious	7,969,110			
	b) Educational				
	c) Medical Relief				
	d) Relief of Poverty				
	e) Other Charitable Objects				
2,946,620	Surplus Carried over to Balance Sheet	1,063,161			
11,253,872	Total	10,443,553	11,253,872	Total	10,443,553

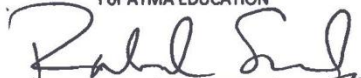
As per our report of even date
For SUNIL GOEL & ASSOCIATES
Chartered Accountants
FRN : 002303N


Proprietor
Sunil Goel
Mem. No. : 081264

Place: New Delhi
Date: 30 SEP 2015



For ATMA EDUCATION


Rahul Sood
Trustee

Place: Mumbai
Date: 30 SEP 2015

For ATMA EDUCATION


Naresh Kriplani
Trustee

ATMA Education

(Registered as a Trust under the Registration Act, 1908)

RECEIPTS & PAYMENTS ACCOUNT FOR THE YEAR ENDED 31ST March, 2015 Consolidated Account for Foreign and Domestic Contributions

Amount (In Rs.)					
31.03.2014	RECEIPTS	31.03.2015	31.03.2014	PAYMENTS	31.03.2015
	Opening Balance		-	Printing & Stationery	40,135
	-Bank	1,479,492	3,676,340	Salaries	5,071,362
	-Cash	1,268	15,136	Staff Welfare	94,247
	-Fixed Deposits	2,687,046	344,786	Duties and Taxes	471,795
10,953,552	Donations	10,277,111	73,651	Hospitality	141,926
-	Other Receipts:-		-	Cleaning & Clening Materials	36,460
297,620	Bank Interest	164,440	-	Legal Charges	87,358
2,700	Sundry Income	-	5,513	Marathon Expenses	62,000
	Loans and Advances	45,875	-	Recruitment Exps	1,000
			-	Books & Periodicals	33,656
			-	Internet Charges	31,642
			121,733	Conveyance & Travelling	110,716
			-	Interest & Penalties	301
			171,569	Telephone & Mobile Expenses	138,111
			-	Water & Refreshments	81,841
			10,725	Sundry Exps	5,205
			-	Portfolio Meet Up/Exps on Edu./CFLI	3,850
			-	Speed Post & Courier	3,188
			431,364	Professional & Technical fees	1,323,497
			-	Installations & antivirus	14,650
			-	Boarding & lodging	19,000
			-	Office Equipments	7,000
			-	Office Supplies	26,067
			-	Audit Fees	31,500
			68,500	Donation Given	39,000
			41,593	Repair & Maintainance	60,920
			-	Subscription Charges	5,000
			177,711	Fundraising	3,600
			-	Bank Charges	5,169
			1,200,000	Rent	1,138,200
			-	Electricity Expenses	118,680
			1,879,353	Training Exps	153,000
			1,555,138	Establiement Expenses	
				Loans and Advances	50,452
				Closing Balance :	
			1,479,492	-Bank	3,685,090
			1,268	-Cash	3,090
				-Fixed Deposits	1,558,525
11,253,872	TOTAL	14,655,232	11,253,872	TOTAL	14,667,232

Significant Accounting Policies & Notes to accounts - Schedule - I

For Sunil Goel & Associates
Chartered Accountants

Sunil Goel, FCA
M.No. 081264
Firm Regn. No. 002303N
Place: New Delhi
Dated : 30 SEP 2015



For ATMA Education

Rahul Sood
(Trustee)

Place: Mumbai
Date: 30 SEP 2015

Naresh Kiplani
(Trustee)

Atma Education

Schedules forming part of the Financial Statements for the year ended March 31, 2015

SCHEDULE – I - Significant accounting policies and notes to the Financial Statements

Basis of preparation

The Financial Statements of the Trust are prepared under the historical cost convention, on cash basis of accounting in accordance with the generally accepted accounting principles in India.

A. SIGNIFICANT ACCOUNTING POLICIES

1. Funds

The Trust reports funds as Corpus if they are received with donor stipulations that they shall form part of corpus.

2. Fixed assets, Depreciation and Amortisation

The Trust charges depreciation as per provisions of the Income Tax Act, 1961.

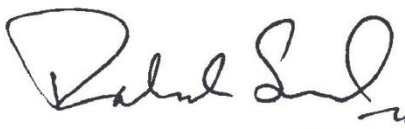
3. Revenue recognition

Donation

Incomes from donation received are recognized on actual receipt basis.



For Atma Education


(Trustee)


(Trustee)

ATMA EDUCATION**Schedule I****Notes to Accounts****1. Fixed Assets**

Particulars	Depreciation Rate	Balance as per last Balance Sheet	Additions	Deletions	Net	Depreciation for the year	Net Block as at 31st March, 2015
Computer							
Desktop	60%	11,429	-	-	11,429	6,857	4,572
Laptop	60%	11,261	-	-	11,261	6,757	4,504
Printer	60%	650	-	-	650	390	260
Furniture & Fixtures							
Office Chairs	10%	132,307	-	-	132,307	13,231	119,076
Storage Racks	10%	5,031	-	-	5,031	503	4,528
Office Grill	10%	8,140	-	-	8,140	814	7,326
Water Tank	10%	7,225	-	-	7,225	723	6,503
Electrical Material	10%	25,900	-	-	25,900	2,590	23,310
Office Equipment							
Air Conditioner	15%	8,609	-	-	8,609	1,291	7,318
Desk Phones	15%	6,141	-	-	6,141	921	5,220
Fans	15%	1,341	-	-	1,341	201	1,140
Refrigerator	15%	9,212	-	-	9,212	1,382	7,830
Water Purifier	15%	-	7,000	-	7,000	1,050	5,950
Total		227,246	7,000	-	234,246	36,710	197,536



For ATMA EDUCATION

Rahul Singh
TRUSTEE / AUTHORISED SIGNATORY